

# Portable Hose and Cable Reels

# HANNAY REELS



 **Hannay®  
Reels**  
*The reel leader.*

**For use in:**

- Industrial Maintenance
- Fire Protection/Rescue Operations
- On-site Repair
- Media Events/Entertainment
- Mobile Broadcasting
- Grounds Maintenance
- Power Tools and Lights

H-9421-POR  
Rev. 4



# Portable Storage Reels

## Model C16-10-11

The model C16-10-11 portable cable storage reel is small, lightweight, and durable for quick and easy use—especially in fire/rescue, mobile broadcasting, or industrial maintenance and repair applications where long lengths of cable are payed out over large areas. This model is supplied with a spring drag device to brake the reel.

## Model C20-14-16

Model C20-14-16 is a strong, portable reel for storing higher capacities. Steel construction with direct crank rewind for fast, easy pickup. Adjustable friction break is used to brake the reel. An optional pin lock is available at additional cost.

### Rewind:

Models C16-10-11 and C20-14-16 feature crank rewind handles permanently attached to the disc. Insert cable in opening in drum and disc to initiate winding.

**NOTE: THESE STORAGE REELS HAVE NO LIVE CONNECTIONS.**



For:

- Broadcast Cable
- Extension Cord
- Rope

**Model C16-10-11**

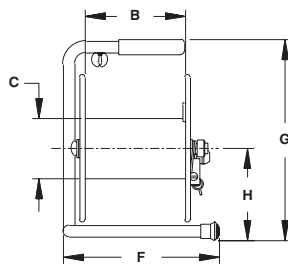


For:

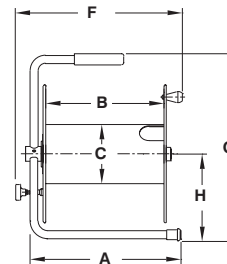
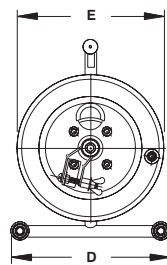
- Broadcast Cable
- Extension Cord
- Forestry Fire Hose
- Rope

**Model C20-14-16**

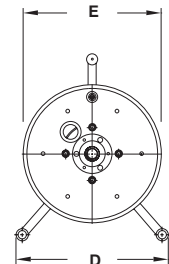
## Dimensions and capacities



Model C16-10-11



Model C20-14-16



**BE SURE TO CHECK DIMENSIONS AND WEIGHTS PRIOR TO ORDERING.**

To receive a detailed parts breakdown drawing for Model C16-10-11, request ISO 88, for Model C20-14-16, request ISO 121.

Cable Capacity of Reel			1" collapsible hose	Model Number	Reel Dimensions								Approx. Weight	
feet	feet	m.			inches	inches	inches	inches	inches	inches	inches	inches	inches	lb.
<b>Gauge/Number of Conductors</b>														
16/3	14/3	12/3												
<b>O.D. (in)</b>	.39	.53	.60		<b>A</b>	<b>B</b>	<b>C</b>	<b>D</b>	<b>E</b>	<b>F</b>	<b>G</b>	<b>H</b>	<b>NET</b>	<b>SHIP</b>
O.D. (mm)	10.0	14.0	15.0											
	<b>275</b>	<b>125</b>	<b>100</b>	—	*C16-10-11	—	7.5	4.5	11.88	10.75	11.75	15	6.88	10
	84	38	30	—		—	191	114	302	273	298	381	175	6
	—	<b>350</b>	<b>250</b>	<b>100</b>	*C20-14-16	15	12	6	11.5	14	16.75	19	8.62	18
	—	107	76	30		381	305	152	292	356	425	483	219	12

Specifications subject to change.

\*UPS Shippable.

---

# Cable Conversions

## Power/Control Cable

Wire Size (AWG)/ Conductors	Area (Per Conductor)	
	Circ. Mils	Sq. mm
16/3	2,600	1.3
14/3	4,100	2.1
12/3	6,500	3.3
10/3	10,500	5.3
8/3	16,800	8.5



*From ballfields and apartment complexes to restaurants and schools, Hannay portable spray reels make groundskeeping safer, easier and more efficient.*

# Portable Hose Reels on Wheels

To handle 1/2" through 1" I.D. hose.

Hannay Hose Reel Models 1100 and AT1200 are designed for portable use in grounds maintenance by the restaurant, fast food, hotel and other industries.

Hannay portable reels get to and from the job fast. Pickup and storage are quick and neat, keeping hose safely out of the way while minimizing wear and tear.

Models 1100 and AT1200 are continuous flow reels with swivel joint inlet, fluid hub and outlet riser.

Model AT1200 comes with pneumatic tires.

### Rewind:

Direct crank rewind. Model 1100 and 1200 have a permanently attached crank.

### Inlet:

Model 1100 – standard inlet is 90° ball bearing swivel joint with 1/2" female NPT threads.

Model AT1200 – standard inlet is 90° ball bearing swivel joint with 1" female NPT threads.

### Outlet:

Model 1100 and AT1200 – standard outlet is female NPT threads.

**Other sizes and/or threads, including male GHT threads, can be furnished and must be specified.**

**Prefix GH to model number when ordering garden hose thread, e.g., GHAT1200.**

### Operating Pressures & Temperatures:

Model 1100 operates at pressures to 3000 psi (207 bar) and temperatures from +20° F to +400° F (-7° C to +204° C).

Model AT1200 operates at pressures to 1000 psi (69 bar) and temperatures from -80° F to +185° F (-62° C to +85° C).

**Reels to operate at other pressures and temperatures can be furnished at extra cost.**

For:

- Grounds Maintenance
- Restaurants
- Home Use

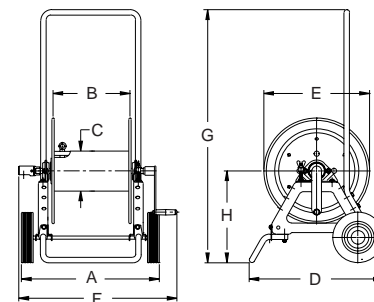


Model 1100

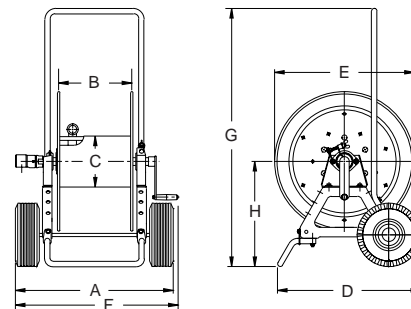
Model AT1200

Shown with GH Option

### Dimensions and capacities



Model 1100



Model AT1200

### BE SURE TO CHECK DIMENSIONS AND WEIGHTS PRIOR TO ORDERING.

To receive a detailed parts breakdown drawing for Model 1100, request ISO 48, for Model AT1200, request ISO 87.

Hose Capacity of Reel						Model Number	Reel Dimensions								Approx. Weight	
feet m.							inches mm.								lb.	kg.
I.D. (in)	3/8"	1/2"	5/8"	3/4"	1"	A	B	C	D	E	F	G	H	NET	SHIP	
I.D. (mm)	10	13	16	19	25											
O.D. (in)	3/4"	7/8"	1"	1 9/32"	1 9/16"											
O.D. (mm)	19	22	25	33	40											
	<b>300</b>	<b>200</b>	<b>150</b>	–	–	*1100	21.5	12	6	22	16.5	24.62	39	13.81	47	55
	91	61	46	–	–		546	305	152	559	419	625	991	351	21	25
	–	<b>350</b>	<b>250</b>	<b>150</b>	<b>100</b>	*AT1200	24.88	11.5	8	23	22	29.5	40	17.25	73	116
	–	107	76	46	30		632	292	203	584	559	749	1016	438	33	53

Specifications subject to change.

\*UPS Shippable – some assembly required.

# Portable Storage Reels on Wheels

## Models C1150 and ATC1250

These direct crank rewind reels are equipped with one-piece foot, rubber tires, and removable steel handlebar for long-term shipping and storage. A spring drag device is used to brake the reel.

A spring drag device is used to brake the reel.

Model C1150 – For storing cable, hose or rope.

A 7/8" x 1 3/4" (22.2 mm x 44.4 mm) opening in the drum permits the cable end to be inserted to initiate winding.

Model ATC1250 – A larger version of the C1150 model with pneumatic tires and a 4" x 5 1/2" (101.6 mm x 139.7 mm) drum opening.

**For:**

- Industrial Maintenance
- Construction
- Agriculture
- Grounds Maintenance



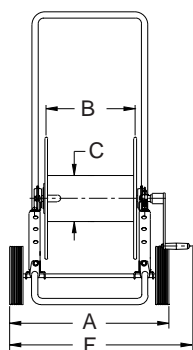
Model C1150



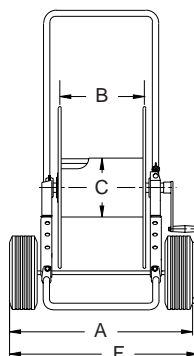
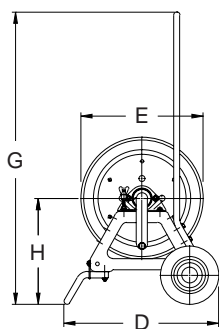
Model ATC1250

NOTE: THESE STORAGE REELS HAVE NO LIVE CONNECTIONS.

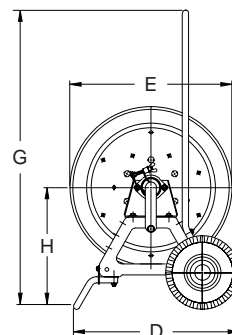
## Dimensions and capacities



Model C1150



Model ATC1250



## BE SURE TO CHECK DIMENSIONS AND WEIGHTS PRIOR TO ORDERING.

To receive a detailed parts breakdown drawing for Model C1150, request ISO 48, for Model ATC1250, request ISO 87.

Cable Capacity of Reel				Model Number	Reel Dimensions							Approx. Weight	
feet m.					inches mm.							lb. kg.	
Gauge/Number of Conductors				A	B	C	D	E	F	G	H	NET	SHIP
16/3	14/3	12/3	10/3										
<b>O.D. (in)</b>	<b>.390</b>	<b>.530</b>	<b>.600</b>	<b>.690</b>									
O.D. (mm)	10	14	15	18									
	<b>1100</b>	<b>500</b>	<b>400</b>	<b>300</b>	*C1150	21.5	12	6	22	16.5	24.25	39	13.81
	335	152	122	91		546	305	152	559	419	616	991	351
	<b>1800</b>	<b>950</b>	<b>750</b>	<b>550</b>	*ATC1250	24.88	11.5	8	23	23	265	40	17.25
	549	290	229	168		632	292	203	584	584	673	1016	438
													37
													49
													17
													22
													57
													105
													26
													48

Specifications subject to change.

**Notes:**

When ordering C1150 and ATC1250, specify model number, O.D., length and weight of cable, hose, etc.

\*UPS Shippable – some assembly required.

## Portable Cable Reel on Wheels

### Model 1300.

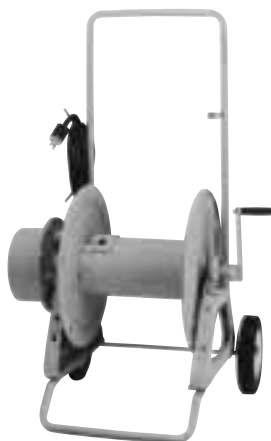
This direct crank rewind reel is equipped with one-piece front foot, rubber tires and removable steel handlebar. An adjustable spring drag device is used to brake the reel. A 6-foot power source lead of 10/3 cable with a 15 amp 3-prong straight blade is provided as standard (twist lock plug is optional). Assemblies with additional conductors are available at extra cost and must be specified.

**Rewind:**

Direct rewind crank is permanently attached to axle.

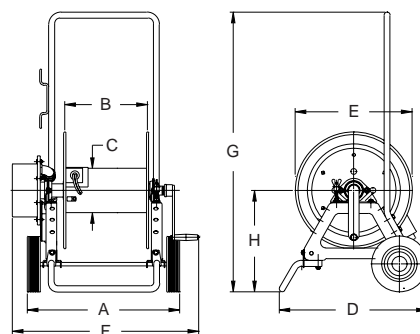
**For:**

- Industrial Maintenance
- Construction
- Agriculture
- Broadcast
- Grounds Maintenance



Model 1300

### Dimensions and capacities



Model 1300

**BE SURE TO CHECK DIMENSIONS AND WEIGHTS PRIOR TO ORDERING.**

To receive a detailed parts breakdown drawing for Model 1300, request ISO 189.

Cable Capacity of Reel <u>feet</u> m.	Model Number	Reel Dimensions <u>inches</u> mm.									Approx. Weight <u>lb.</u> kg.		
		A	B	C	D	E	F	G	H	NET	SHIP		
<b>Gauge/Number of Conductors</b>													
	14/3	12/3	10/3										
<b>O.D. (in)</b>	.53	.60	.69	A	B	C	D	E	F	G	H	NET	SHIP
O.D. (mm)	14	15	18										
<b>500</b>	<b>400</b>	<b>300</b>		21.5	12	6	22	16.5	26.88	39	13.81	50	84
	152	122	91	546	305	152	559	419	683	991	351	23	38

Specifications subject to change.  
\*UPS Shippable - some assembly required.

## Steel hand truck

### Model 4300. For portability of hose and cable reels.

Tubular steel hand truck is equipped with 4" x 16" O.D. pneumatic tires for use with many hose or cable reels. The reel you specify is permanently attached to the truck frame and is shipped as a single unit. Overall dimensions will vary according to the reel model used. Hand truck is finished in the same color you specify for the reel. To order give complete model number and specifications for the reel you require and specify that the reel is to be factory installed on Model 4300 hand truck. Specify if reel spool axis is to be perpendicular to truck axle (as shown) or parallel to the truck axle. Hand truck adds 48 lbs. (22 kg.) to weight of reel model.

**Note: Truck is also sold separately. Maximum reel size dimensions when installed on hand truck:**

A=32" (812.8 mm), E=32" (812.8 mm),  
B=27" (685.8 mm).



4300 truck with reel attached

# Portable Electric Cable Reels

## Model LC16-10-11

This durable reel is designed to carry cable permanently wired to its waterproof duplex, which allows the reel to remain on-site as a power source.

A covered duplex receptacle for 3-pronged plugs is standard. A twist lock duplex receptacle can be specified at no extra cost. The reel is supplied with a spring-drag device to brake the reel.

### Rewind:

Features crank rewind handle permanently attached to the disc.

## Series CR

These models are compact, lightweight, and have the same rugged construction as our large cable reels. They handle a large capacity of power cable for their size and weight and feature a 3-conductor 30 amp collector ring assembly, which is housed inside the drum. A 6-foot power source lead of 12/3 cable with a 15 amp 3-prong straight blade plug is provided as standard (twist lock plug is optional). Wires from collector ring terminals extend through a grommetted opening in the drum for accessibility. Adjustable friction brake is used to brake the reel.

### Rewind:

A crank rewind handle is permanently attached to the disc.



For:

- Extension Cord
- Broadcast Cable

Model LC16-10-11

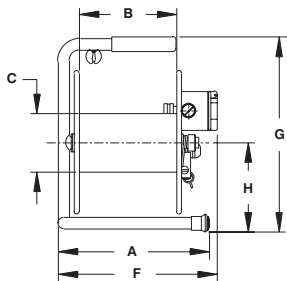


For:

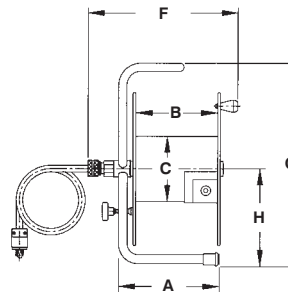
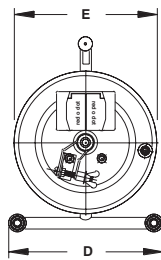
- Industrial
- Broadcast
- Agricultural
- Fire and Rescue

Series CR

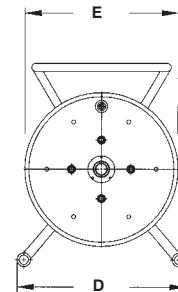
## Dimensions and capacities



Model LC16-10-11



Series CR



## BE SURE TO CHECK DIMENSIONS AND WEIGHTS PRIOR TO ORDERING.

To receive a detailed parts breakdown drawing for Series LC, request ISO 120, for Series CR request ISO 156.

Cable Capacity of Reel feet m.	Model Number	Reel Dimensions inches mm.										Approx. Weight lb. kg.		
		A	B	C	D	E	F	G	H	NET	SHIP			
<b>Gauge/Number of Conductors</b>														
16/3 14/3 12/3														
O.D. (in) .39 .53 .60		A	B	C	D	E	F	G	H	NET	SHIP			
O.D. (mm) 10 13 15														
275 125 100	*LC16-10-11	11.75	7.5	4.5	11.88	10.75	12.25	15	6.88	11	15			
84 38 30		298	190	114	302	273	311	381	175	5	7			
400 200 150	*CR16-14-16	9.25	7.5	6	15.5	14	14.5	18.5	8.88	24	28			
122 61 46		235	190	152	394	356	368	470	226	11	13			
650 300 250	*CR16-17-18	9.25	7.5	6	15.5	16.5	14.5	18.5	8.88	26	30			
198 91 76		235	190	152	394	419	368	470	226	12	14			

Specifications subject to change.

\*UPS Shippable.

Hannay Reels, Inc. Telephone 518-797-3791  
TOLL FREE 1-877-GOREELS

FAX 1-800-REELING (733-5464) USA  
FAX 518-797-3259 (International)

www.hannay.com  
reels@hannay.com

## Hannay portable hose and cable reels put you on the go.

Hannay's portable reels are lightweight for easy portability but are constructed to the same high standards as all Hannay reels. As the world's leading manufacturer of hose and cable reels, Hannay constructs all reels to high standards. Our portable reels come in a range of sizes and are used in a variety of applications, including broadcasting, construction, industrial maintenance and repair, grounds and lawn maintenance, and fire and rescue. You can rely on Hannay's portable reels to get you in service quickly.

### To order Hannay Reels

Please refer to our Ordering Guide & Accessory Catalog. For more information on our 2700 standard models of hose and cable reels, please ask about specific product catalogs.

Other Hannay Catalogs available are: Aviation Refueling, Cable, Firefighting, LP Gas, Lube, Petroleum Delivery, Spray, Stainless, Triad Rescue, Welding and Ordering Guide & Accessory Catalog.

### Available from:



*Hannay's rugged portable hose reels are the natural choice for a wide range of outdoor maintenance activities.*



*Lightweight, durable Hannay portable reels bring power right to your job site while protecting valuable electrical cable from damage.*



553 State Route 143  
Westerlo, NY 12193-0159  
Telephone 518-797-3791  
TOLL FREE 1-877-GOREELS  
FAX 1-800-REELING (733-5464) USA

OR  
FAX 518-797-3259 (International)  
www.hannay.com  
reels@hannay.com

CS/10M/8/99

H-9421-POR  
Rev. 4