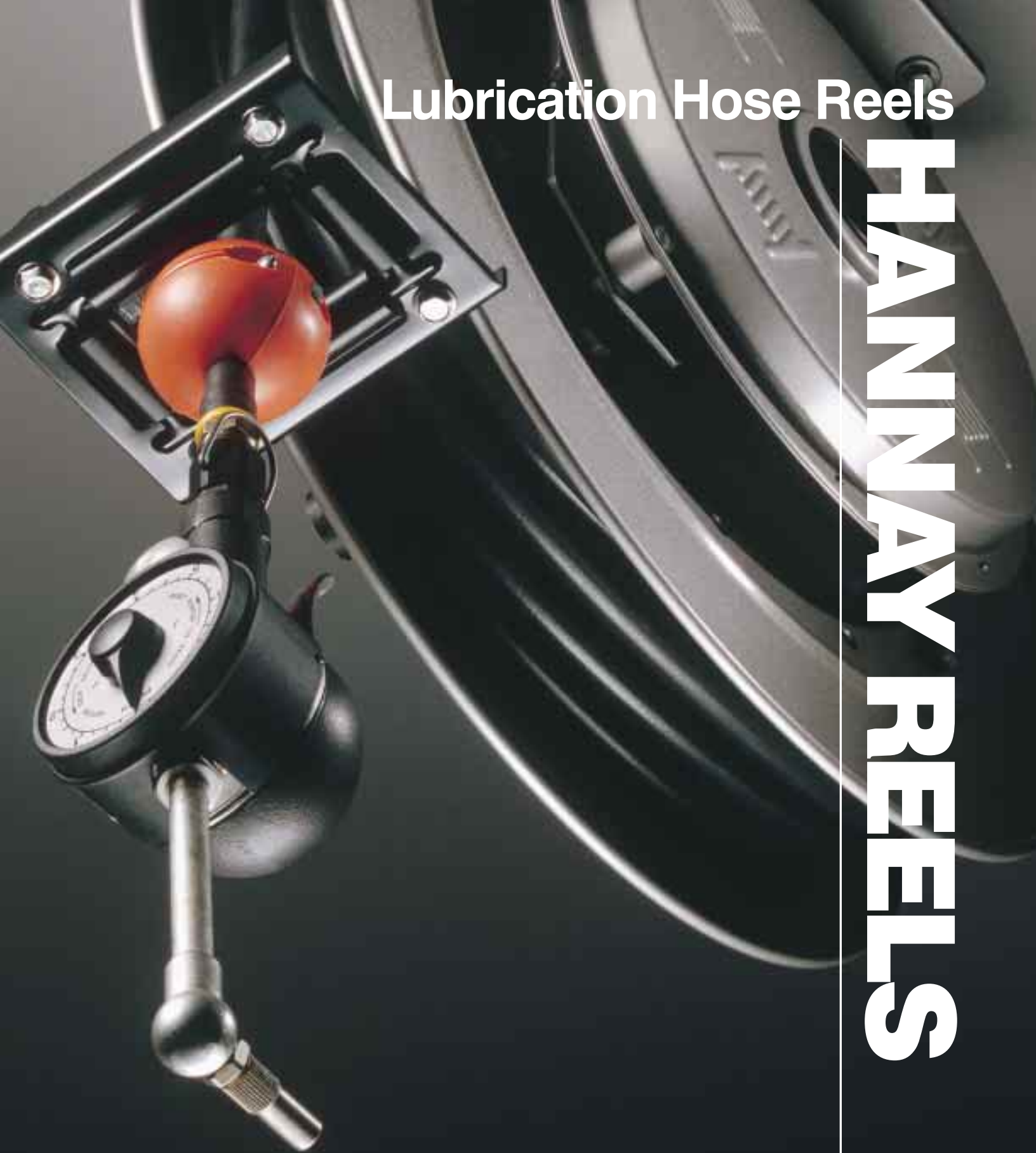


Lubrication Hose Reels

HANNAY REELS



For use for:

- Off-road Lubrication Vehicles
- On-site Lubrication Sites
- Construction Sites
- Fuel, Lube, and Antifreeze
- Pneumatic or Hydraulic Tools
- Air Compressors
- Washdown and Spray Operations
- Lubrication Service Industry

H-9455-LU
Rev. 4

High Pressure Spring Rewind Reels To handle single 1/4" or 3/8" I.D. hose.

Series N500 reels offer a compact frame and narrow base for ease of installation plus the advantages of spring rewind for efficient hose handling.

Rewind:

A heavy-duty spring motor provides self-contained rewind power. A non sparking ratchet assembly locks the reel when the desired length of hose has been payed out. A pull on the hose unlocks the reel and the spring motor retracts the hose. A declutching arbor is provided to prevent damage from reverse winding.

Inlet:

Standard inlet is 90° swivel joint with 1/4" female NPT threads. 3/8" female NPT threads are optional **and must be specified on order.**

Outlet:

Standard outlet is 1/4" female NPT threads. 3/8" female NPT threads are optional **and must be specified on order.**

Other threads can be furnished and must be specified.

Operating Pressures & Temperatures:

These 1/4" reels operate at standard pressure of 10,000 psi (689 bar) and handle product temperatures from -20° F to +225° F (-29° C to +107° C). Optional 1/4" 3000 psi (207 bar), or 3/8" 3000 psi (207 bar) or 8000 psi (552 bar) reels are available upon request.

Rollers:

All models are supplied with a 4-way roller assembly, in the STANDARD SR POSITION. Other roller positions can be specified. (See Ordering Guide & Accessory Catalog.)

Hose Stop:

A hose stop should be used to prevent damage to rollers and nozzles and to permit adjustment of free hose length. (See Ordering Guide & Accessory Catalog.)

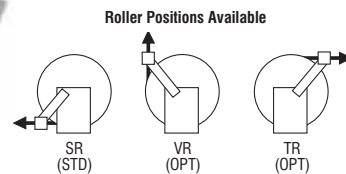
Finish:

See note on page 7.



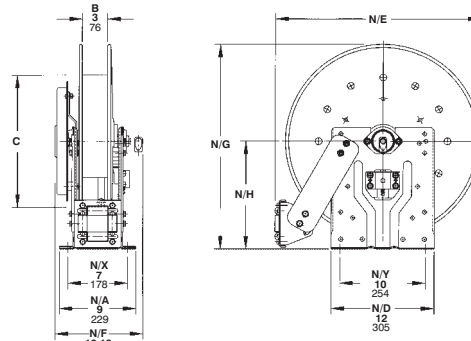
For:

- Chassis Grease
- Hydraulics
- Air/Water



Series N500
Standard SR
Roller Position Shown

Dimensions and capacities



Series N500

BE SURE TO CHECK DIMENSIONS AND WEIGHTS PRIOR TO ORDERING.

To receive a detailed parts breakdown drawing for Series N500, request ISO 92.

Hose Capacity of Reel <u>feet</u> m.	Model Number	Reel Dimensions <u>inches</u> mm.				Approx. Weight <u>lb.</u> kg.		Roller Assy Supplied on Standard Models
		C	N/E	N/G	N/H	NET	SHIP	
I.D. (in) 1/4" 3/8"								
I.D. (mm) 6 10								
O.D. (in) 5/8" 3/4"								
O.D. (mm) 16 19								
25 25	*N515-14-16C	8	17.62	16.12	9.12	48	83	N203
8 8		203	448	409	232	22	38	
35 35	*N515-16-17C	10.5	18.5	17	9.12	51	86	N203
11 11		267	470	432	232	23	39	
50 50	*N515-19-20J	10.5	20.75	20	10.62	63	98	N203
15 15		267	527	508	270	29	44	
75 75	*N515-23-24J	15.5	23.75	24	12.62	75	110	N203
23 23		394	603	610	321	34	50	

Specifications subject to change.

Notes:

1. Reel models and capacities shown are for standard drag applications; for vertical lift applications consult factory.

2. Other sizes, from standard components, available on request.

*UPS Shippable

Spring Rewind Reels

To handle single 3/8" through 1-1/2" I.D. hose.

Single hose spring rewind reels are available in two frame configurations. Series N700 and N800 have a narrow frame and compact mounting base. The channel frame for heavy-duty applications is standard in the 900 series.

Rewind:

A heavy-duty spring motor provides self-contained rewind power. A non sparking ratchet assembly locks the reel when the desired length of hose has been payed out. A pull on the hose unlocks the reel and the spring motor retracts the hose. A declutching arbor is provided to prevent damage from reverse winding.

Inlets:

Series N700 – Standard inlet is 90° swivel joint with 1/2" female NPT threads.

Series N800 – Standard inlet is 90° swivel joint with 1" female NPT threads.

Series 900 – Standard inlet is 90° ball bearing swivel joint with 1-1/2" female NPT threads and 2" victaulic groove.

Outlets:

Series N700 – Standard outlet is 1/2" female NPT threads.

Series N800 – Standard outlet is 1" female NPT threads.

Series 900 – Standard outlet is 1-1/2" female NPT threads.

Other sizes and/or threads can be furnished and must be specified.

Operating Pressures & Temperatures:

Series N700 – These reels operate at pressures to 3000 psi (207 bar) and handle product temperatures from -20° F to +225° F (-29° C to +107° C).

Series N800 – These reels operate at pressures to 1000 psi (69 bar) and handle product temperatures from -20° F to +225° F (-29° C to +107° C).

Series 900 – These reels operate at pressures to 600 psi (41 bar) and handle product temperatures from -60° F to +175° F (-51° C to +79° C).

Reels to operate at other pressures and temperatures can be furnished at extra cost.

Rollers:

All models are supplied with a 4-way roller assembly, in the STANDARD SR POSITION.

Other roller positions can be specified. (See Ordering Guide & Accessory Catalog.)

Hose Stop:

A hose stop should be used to prevent damage to rollers and nozzles and to permit adjustment of free hose length. (See Ordering Guide & Accessory Catalog.)

Finish:

See note on page 7.



Series N700

For:

- Lubrication
- Air/Water
- Assembly Operations
- General Industrial Applications
- Washdown
- Air Tools



Series N800

For:

- Fuel Dispensing
- Waste Oil Evacuation
- Air/Water

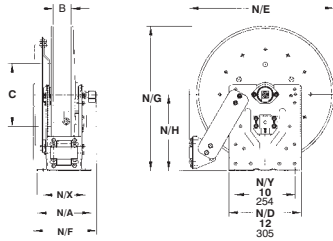


Series 900

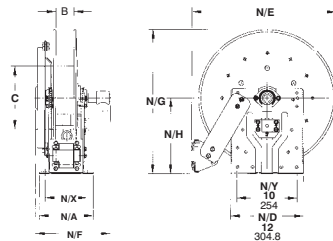
For:

- Bulk Transfer
- Fuel Dispensing
- Suction/Discharge

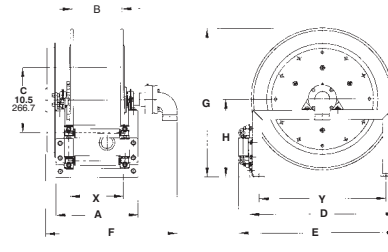
Dimensions and capacities



Series N700 Narrow Frame

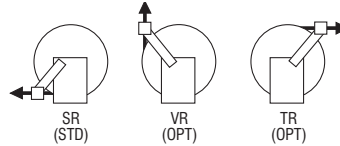


Series N800 Narrow Frame



Series 900 Channel Frame

Roller Positions Available



BE SURE TO CHECK DIMENSIONS AND WEIGHTS PRIOR TO ORDERING.

To receive a detailed parts breakdown drawing for Series N700, request ISO 79, for Series N800, request ISO 81, for Series 900, request ISO 29.

Hose Capacity of Reel						Model Number	Reel Dimensions														Approx. Weight		Roller Assy Supplied on Standard Models			
feet m.							inches mm.														lb.	kg.				
I.D. (in)	3/8"	1/2"	3/4"	1"	1 1/4"	1 1/2"	A	N/A	B	C	D	E	N/E	F	N/F	G	N/G	H	N/H	N/X	X	Y	NET	SHIP		
I.D. (mm)	10	13	19	25	32	38																				
O.D. (in)	3/4"	7/8"	1 9/32"	1 9/16"	1 13/16"	2 1/16"																				
O.D. (mm)	19	22	33	40	46	52																				
25	25	-	-	-	-	-	N716-14-16C	-	10	4	8	-	-	17.62	-	11.75	-	16.12	-	9.12	8	-	-	52	87	N204
8	8	-	-	-	-	-		-	254	102	203	-	-	448	-	298	-	409	-	232	203	-	-	24	39	
35	35	-	-	-	-	-	N716-16-17C	9.25	10	4	10.5	17.5	18.62	18.5	13.25	11.75	17.75	17	9.88	9.12	8	4.5	14.5	55	90	N204
11	11	-	-	-	-	-		235	254	102	267	445	473	470	337	298	451	432	251	232	203	114	368	25	41	
50	50	-	-	-	-	-	N716-19-20J	9.25	10	4	10.5	18	19.5	20.75	13.25	11.75	19.75	20	10.38	10.62	8	4.5	15	64	99	N204
15	15	-	-	-	-	-		235	254	102	267	457	495	527	337	298	502	508	264	270	203	114	381	29	45	
65	65	-	-	-	-	-	N716-23-24J	9.25	10	4	15.5	23.25	24.38	23.75	13.25	11.75	23.88	24	12.5	12.62	8	4.5	20.25	79	114	N204
20	20	-	-	-	-	-		235.0	254	101.6	393.7	590.6	619.3	603.3	342.9	298.5	606.6	609.6	317.5	320.5	203	114	514	36	52	
75	75	-	-	-	-	-	N716-25-26B	9.25	10	4	15.5	25	26.12	25.25	13.25	11.75	25.88	26	13.5	13.62	8	4.5	22	90	125	N204
23	23	-	-	-	-	-		235	254	102	394	635	663	641	337	298	657	660	343	346	203	114	559	41	57	
100	100	-	-	-	-	-	N718-25-26G	11.25	12	6	15.5	25	26.12	25.25	15.25	13.75	25.88	26	13.5	13.62	10	6.5	22	96	131	N206
30	30	-	-	-	-	-		286	305	152	394	635	663	641	387	349	657	660	343	346	254	165	559	44	59	
-	-	25	15	-	-	-	N816-19-20J	9.25	10	4	10.5	18	19.5	20.75	14.75	13.25	19.75	20	10.38	10.62	8	4.5	15	63	98	N204
-	-	8	5	-	-	-		235	254	102	267	457	495	527	375	337	502	508	264	270	203	114	381	29	44	
-	-	50	25	-	-	-	N816-23-24J	9.25	10	4	10.5	23.25	24.38	23.75	14.75	13.25	23.88	24	12.5	12.62	8	4.5	20.25	81	116	N204
-	-	15	8	-	-	-		235	254	102	267	591	619	603	375	337	607	610	318	321	203	114	514	37	53	
-	-	60	35	-	-	-	N816-25-26B	9.25	10	4	10.5	25	26.12	25.25	14.75	13.25	25.88	26	13.5	13.62	8	4.5	22	96	131	N204
-	-	18	11	-	-	-		235	254	102	267	635	663	641	375	337	657	660	343	346	203	114	559	44	59	
-	-	70	50	-	-	-	N818-25-26B	11.25	12	6	10.5	25	26.12	25.25	16.75	15.25	25.88	26	13.5	13.62	10	6.5	22	102	137	N206
-	-	21	15	-	-	-		286	305	152	267	635	663	641	425	387	657	660	343	346	254	165	559	46	62	
-	-	-	-	40	25	-	922-23-24B	15.25	-	10	-	23.25	25.25	-	24	-	23.88	-	12.5	-	-	10.5	20.25	104	139	R310
-	-	-	-	12	8	-		387	-	254	-	591	641	-	610	-	607	-	318	-	-	267	514	47	63	
-	-	-	-	50	40	-	920-25-26A	13.25	-	8	-	25	27	-	22.75	-	25.88	-	13.5	-	-	8.5	22	127	162	R308
-	-	-	-	15	12	-		337	-	203	-	635	686	-	578	-	657	-	343	-	-	216	559	58	73	
-	-	-	-	75	50	-	922-30-31A	15.25	-	10	-	28.5	30.5	-	24.75	-	31.38	-	17	-	-	10.5	25.5	156	191	R310
-	-	-	-	23	15	-		387	-	254	-	724	775	-	629	-	797	-	432	-	-	267	648	71	87	

Specifications subject to change

Notes:

1. Reel models and capacities shown are for standard drag applications; for vertical lift applications consult factory.
2. Other sizes, from standard components, available on request.

Manual or Power Rewind Reels

To handle single 1" through 1-1/2" I.D. hose.

A strong, heavy-duty reel designed for longer lengths and larger diameters of hose through 1-1/2" I.D. Frame designed primarily for various power rewind options. Versatile reel features a variety of rewind and joint options.

Rewind:

Choose gear-driven crank rewind or chain and sprocket drive powered by an electric, hydraulic or compressed air motor. Gear-driven mechanism with pinion shaft brake can be specified as auxiliary crank rewind on power rewind reels, at extra cost.

Brakes & Locks:

Crank rewind reels will be supplied with pinion brake and power rewind reels with a comet brake. Other brake and locking devices may be specified. (See Ordering Guide and Accessory Catalog.)

Inlet:

Standard inlet is a 90° ball bearing swivel joint with 1-1/2" female NPT threads and 2" victaulic groove.

Outlet:

Standard outlet is a flanged riser with 1-1/2" female NPT threads.

Other sizes and/or threads can be furnished and must be specified.

Standard inlet, outlet riser, and hub assembly are steel. These components can be supplied in stainless steel, aluminum, or bronze, at extra cost, to meet special product handling requirements.

Optional Rollers:

Rollers may be purchased as accessory items. Specify roller position when ordering. Mounting brackets are necessary. (See Ordering Guide & Accessory Catalog).

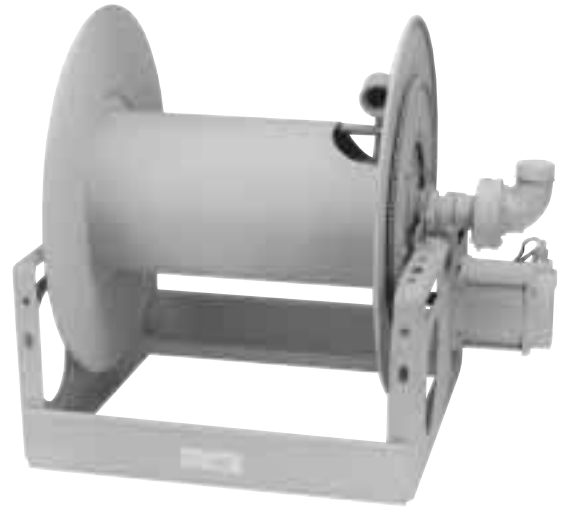
Operating Pressures & Temperatures:

These reels operate at pressures to 600 psi (41 bar) and handle product temperatures from -60° F to +175° F (-51° C to +79° C).

Reels to operate at other pressures and temperatures can be furnished at extra cost.

Finish:

See note on page 7.

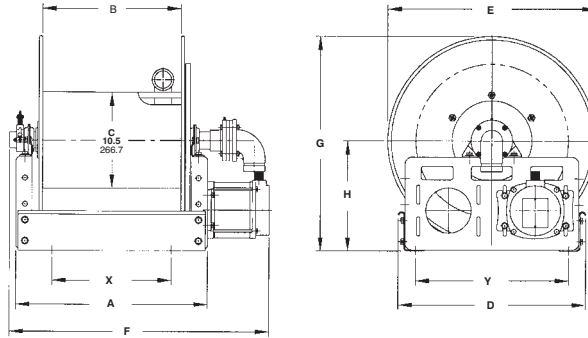


Series 7500

For:

- Fuel Dispensing
- Bulk Transfer
- Suction/Discharge

Dimensions and capacities



Series 7500

BE SURE TO CHECK DIMENSIONS AND WEIGHTS PRIOR TO ORDERING.

To receive a detailed parts breakdown drawing for Series 7500, request ISO 18.

Hose Capacity of Reel				Model Number	Reel Dimensions											Approx. Weight			
feet m.					inches mm.											Crk. lb.	Ship kg.		
I.D. (in)	1"	1 1/4"	1 1/2"	For Power Rewind see Note 4	A	B	D	E	F	F	F	F	G	H	X	Y	NET	SHIP	
I.D. (mm)	25.4	31.8	38.1		CRANK	ELEC.	AIR	HYD											
O.D. (in)	1 9/16"	1 13/16"	2 1/16"		O.D. (mm)														
85	70	50	7528-19-21	25.5	20	20.5	18.75	32	33	32.75	32.75	21.5	12.12	17.5	16.75	104	146		
25.9	21.3	15.2		647.7	508.0	520.7	476.3	812.8	838.2	831.9	831.9	546.1	307.8	444.5	425.4	47	66		
200	190	100	7538-23-24	35	29.5	20.5	22.75	41.5	42.5	42.25	42.25	23.5	12.12	27.5	16.75	130	172		
61.0	57.9	30.5		889.0	749.3	520.7	577.9	1054.1	1079.5	1073.2	1073.2	596.9	307.8	698.5	425.4	59	78		
115	75	50	7520-25-26	17	11.5	25.5	24.75	23.5	24.5	24.25	24.25	27.88	15.5	9	21.75	106	148		
35.1	22.9	15.2		431.8	292.1	647.7	628.7	596.9	622.3	616.0	616.0	708.2	393.7	228.6	552.4	48	67		
200	135	100	7528-25-26	25.5	20	25.5	24.75	32	33	32.75	32.75	27.88	15.5	17.5	21.75	123	165		
61.0	41.1	30.5		647.7	508.0	647.7	628.7	812.8	838.2	831.9	831.9	708.2	393.7	444.5	552.4	56	75		
190	160	100	7522-30-31	19	13.5	25.5	28.75	25.5	26.5	26.25	26.25	29.88	15.5	11	21.75	118	168		
57.9	48.8	30.5		482.6	342.9	647.7	730.3	647.7	673.1	666.8	666.8	759.0	393.7	279.4	552.4	54	76		
285	260	160	7528-30-31	25.5	20	25.5	28.75	32	33	32.75	32.75	29.88	15.5	17.5	21.75	131	181		
86.9	79.2	48.8		647.7	508.0	647.7	730.3	812.8	838.2	831.9	831.9	759.0	393.7	444.5	552.4	59	82		

Specifications subject to change.

Notes:

- Upon request, reels can be supplied with drum lengths other than shown and with disc sizes in other diameters.
- Dimensions shown for reels up to and including 30-31 disc size reflect pressed frames. All others are channel frames.
- Weights shown in chart are for crank rewind models. ADD these amounts for power rewind models:

	Net (lbs.)	Ship (lbs.)	Net (kg.)	Ship (kg.)
Electric	40	40	18.1	18.1
Hydraulic	20	20	9.1	9.1
Air	20	20	9.1	9.1

4. When ordering power rewind models, prefix model number with:

A = Air Rewind EP = Electric Rewind (1/2 hp) HD = Hydraulic Rewind
(Air rewind reels are supplied with control valve and hose; 12v and 24v DC rewind reels are supplied with switch and solenoid; 115v AC rewind reels are not supplied with switch but can be ordered separately; hydraulic rewind reels are not supplied with control valve.)

Paint Notice

To meet the requirements and performance of vehicle and OEM apparatus paints we recommend our reels be painted with the same or equal paint as used on the specific apparatus the reel is being mounted on.

Hannay Reels will supply any model or custom reel or part with an automotive primer or rust preventative oil finish upon request, allowing application of final coating at your facility. Or at additional cost Hannay can prime / pre-paint all material before final assembly.

In today's regulatory environment this would be the most cost-effective way to meet your finishing standards.

Consult factory for other optional finishes

Standard finish is oven cured enamel. High performance finishes for demanding and corrosive environments are available at an additional cost. Consult factory for specific requirements.

Hannay will go to any length to provide you with the lube hose reel you need.

As the leading manufacturer of hose and cable reels, Hannay knows what you need in a lube hose reel. You need a reel that's long-lasting. Built to high standards. One that requires only minimal routine maintenance. A reel that helps you get the job done.

You need Hannay Reels.

Hannay lube reels are versatile enough to handle everything from fuel, lube and antifreeze to off-road lubrication, washdown and spray, and pneumatic and hydraulic tools.

All our reels are made to stringent specifications, so you know you're buying reels you can depend on year after year, even under the most demanding conditions. Plus, we make reels for every application and every industry. We have 2700 standard models and if one of these doesn't meet your needs, we'll work with you to design a reel that fits your specific application.

This catalog contains our most popular lube hose reels. For other hose reels, cable reels, or reels for specific applications, just ask and we'll send you the catalog you need. After all, when you deal with the reel leader, it's easier to have a reel choice.

To order Hannay Reels

Please refer to our Ordering Guide & Accessory Catalog. For more information on our 2700 standard models of hose and cable reels, please ask about specific product catalogs.



553 State Route 143
Westerlo, NY 12193-0159
Telephone 518-797-3791
TOLL FREE 1-877-GO REELS
FAX 1-800-REELING (733-5464) USA
or
FAX 518-797-3259 (International)
www.hannay.com
reels@hannay.com

BM/7.5M/12/99

H-9455-LU
Rev. 4