




### stainless steel, spring rewind hose reel with centre mounted roller guide arm

AISI 304 and AISI 303 reel, with AISI 303 swivel and AISI 416-420 hub



model	hose capacity	connection BSP in / out	working pressure	dimensions WxLxH ( mm )	weight
37130	15m x 13mm ID	M1/2" - M1/2" D	200 bar	250 x 500 x 480	13 kg
37140	20m x 13mm ID	M1/2" - M1/2" A	200 bar	280 x 500 x 480	18 kg
37142 **	35m x 13mm ID	M1/2" - M1/2" C	200 bar	310 x 590 x 600	26 kg
37147 **	60m x 13mm ID	M1/2" - M1/2" "	200 bar	590 x 590 x 590	50 kg
37143 **	20m x 19mm ID	M1" - M3/4" C	20 bar	310 x 590 x 600	28 kg
37149	25m x 19mm ID	M1" - M3/4" C	20 bar	310 x 590 x 600	28 kg
37150 **	8m x 25mm ID	M1" - M1" A	80 bar	290 x 500 x 480	14 kg
37160 **	15m x 25mm ID	M1" - M1" B	80 bar	480 x 500 x 480	22 kg
37148 **	30m x 25mm ID	M1" - M1" "	20 bar	590 x 590 x 590	51 kg

\*\* also available with ATEX approval 




### stainless steel, spring rewind hose reel with bottom mounted roller guide arm

AISI 304 and AISI 303 reel, with AISI 303 swivel and AISI 416-420 hub



model	hose capacity	connection BSP in / out	working pressure	dimensions WxLxH ( mm )	weight
38400	20m x 13mm ID	M1/2" - M1/2" A	200 bar	300 x 530 x 560	20 kg
37141	25m x 13mm ID	M1/2" - M1/2" C	200 bar	370 x 530 x 550	26 kg
37145	40m x 13mm ID	M1/2" - M1/2" "	200 bar	420 x 530 x 550	34 kg
38360	8m x 25mm ID	M1" - M1" A	80 bar	300 x 530 x 550	18 kg
38361	15m x 25mm ID	M1" - M1" B	80 bar	480 x 530 x 550	24 kg
37146 **	25m x 25mm ID	M1" - M1" "	80 bar	520 x 530 x 550	40 kg

\*\* also available with ATEX approval 



### 316 stainless steel, spring rewind hose reel with centre mounted roller guide arm

AISI 304 reel, with AISI 316 swivel and hub

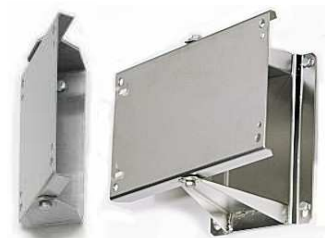


model	hose capacity	connection BSP in / out	working pressure	dimensions WxLxH ( mm )	weight
37170	15m x 25mm ID	M1" - M1" C	10 bar	310 x 590 x 600	25 kg

### stainless steel, swivel bracket

AISI 304 and AISI 303

reel ref	model
A	39601
B	39602
C	39505
D	39600



Other models available for other applications